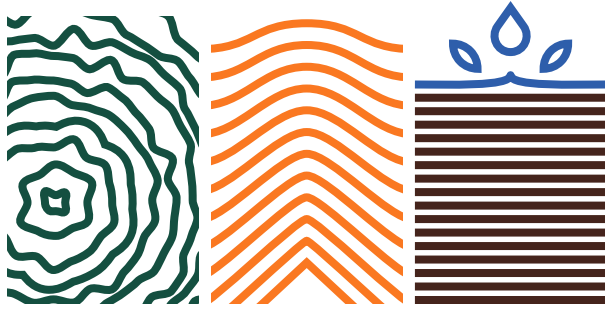


The Urban Lumber Process



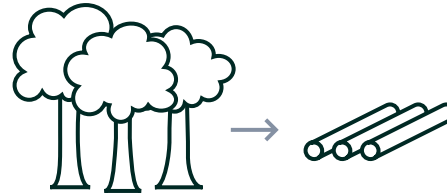
We've pioneered the use of thermally-modified woods in the commercial construction setting. We've been processing American-grown, American-processed hardwoods (mostly ash and oak, but others work too) in high temperature & pressure conditions to create rot & decay-resistant wood. Whether used on planters, benches, tables or as decking or siding, the thermally modified lumber gives the performance of South American hardwoods without the environmental burden.

Our Urban Lumber process involves significant freight, coordination, and careful timing. If you have a special or historically important tree, retain the importance while re-purposing it in a new light.

There are many variables that come into play during this process, but the end result is one that is satisfying to all – a natural way of upcycling trees that meets commercial needs.

No one wants to cut down beautiful, healthy, or historic trees. However, priorities often dictate that it happens. Tournesol Siteworks has developed a process to ensure that these trees have not only a past, but a future!

1



You identify the trees to be upcycled, and contact Tournesol to discuss the project. In order to make sense, there should be a minimum of 10 logs, with a minimum diameter of 12"-16", in lengths cut 8'-16'.

2



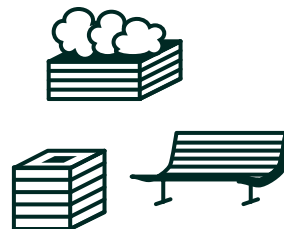
Tournesol arranges for transportation to our mill, where the logs are prepped and cut into rough sizes (referred to as cants).

3



The cant is transferred to our location, where the cants are dried, cut into final dimensional sizes, then thermally modified.

4



The wood is formed, then either used in the product of the customer's choice, or returned to the customer for use on the project.